

L O O
K _ B
O O K

2024 COLLECTION

 GLOSTER

TEAK, CRAFTS & INNOVATION





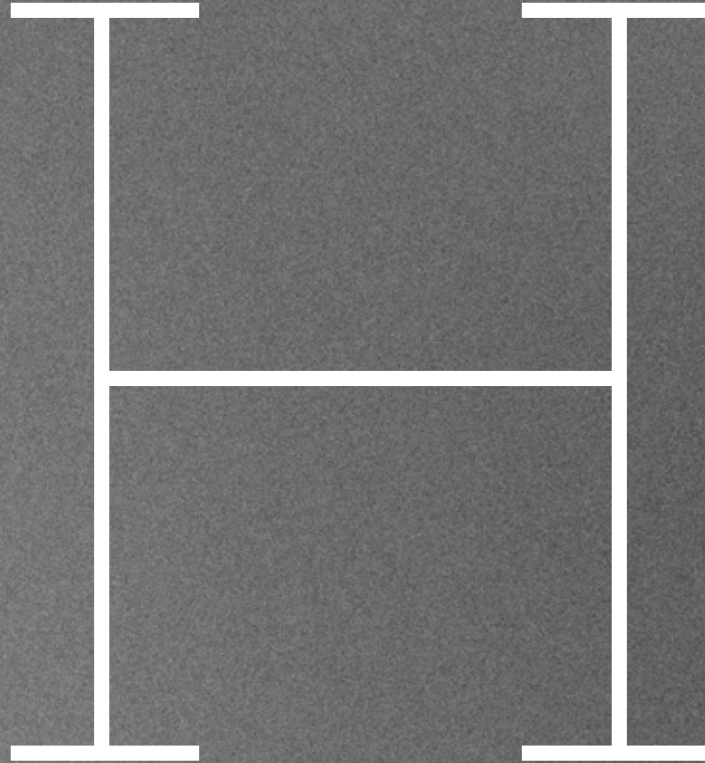
Architecture will always be a part of the backdrop

Open spaces release the heart and the soul. Vast horizons quietly and gently remind us of a freedom lost for centuries. It's no surprise we love the soft dawn, that we wonder at the ruby and amber of a sunset - lost momentarily as the world revolves.

But even nomadic people crave structure. We all need a silhouette against the bright wilderness. A glowing doorway amongst creeping darkness. To step through and to feel at home.

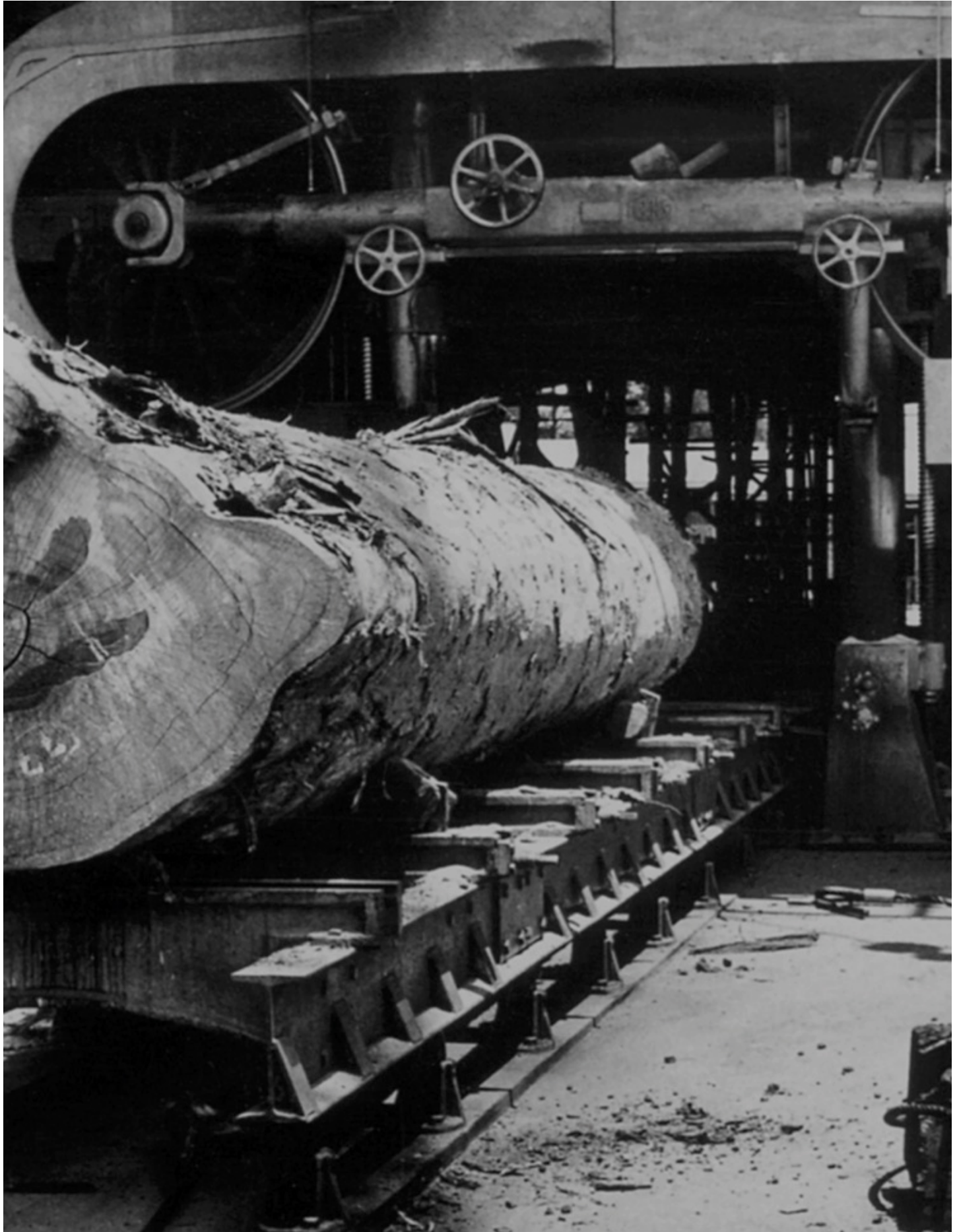
We should never dream to improve upon nature, but we can aspire to compliment her.



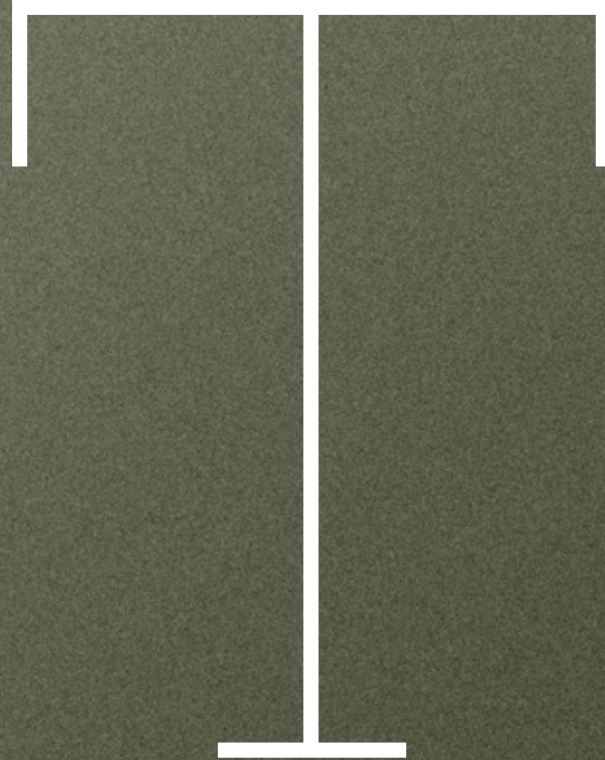


OUR HERITAGE

Gloster's roots can be traced all the way back to West Africa in 1960, where a band of passionate entrepreneurs and furniture makers took the first steps on a long journey. By the late 1980's, increased demand and access to plantation grown teak led us to move our factory to Indonesia. Today, the same passion, conviction and pride that launched the Gloster brand, continues to fuel our business. We may live in a different world than the one occupied by our founders, but one thing remains the same - we are furniture makers whose sole focus is to design and build the world's finest outdoor furniture.







TEAK & PLANTATIONS

The benchmark hardwood for fine outdoor furniture for more than 700 years. With a beautiful, soft natural finish, every piece of Gloster teak originates from carefully managed plantations and is thoroughly inspected to ensure that quality endures. A close-grained hardwood with a high natural oil content, teak is exceptionally hard wearing, highly resistant to rotting and almost impervious to the effects of sun, rain, frost or snow - the first and only choice of timber for outdoor furniture.

Gloster's production of teak is characterised by our approach. We understand our resources and we know our wood. A Gloster teak tree has a lifecycle of at least 50 years - and our wood can always be traced back to its origin. We believe that our customers must be able to trust us, so we treat the world, its resources and its people with respect.

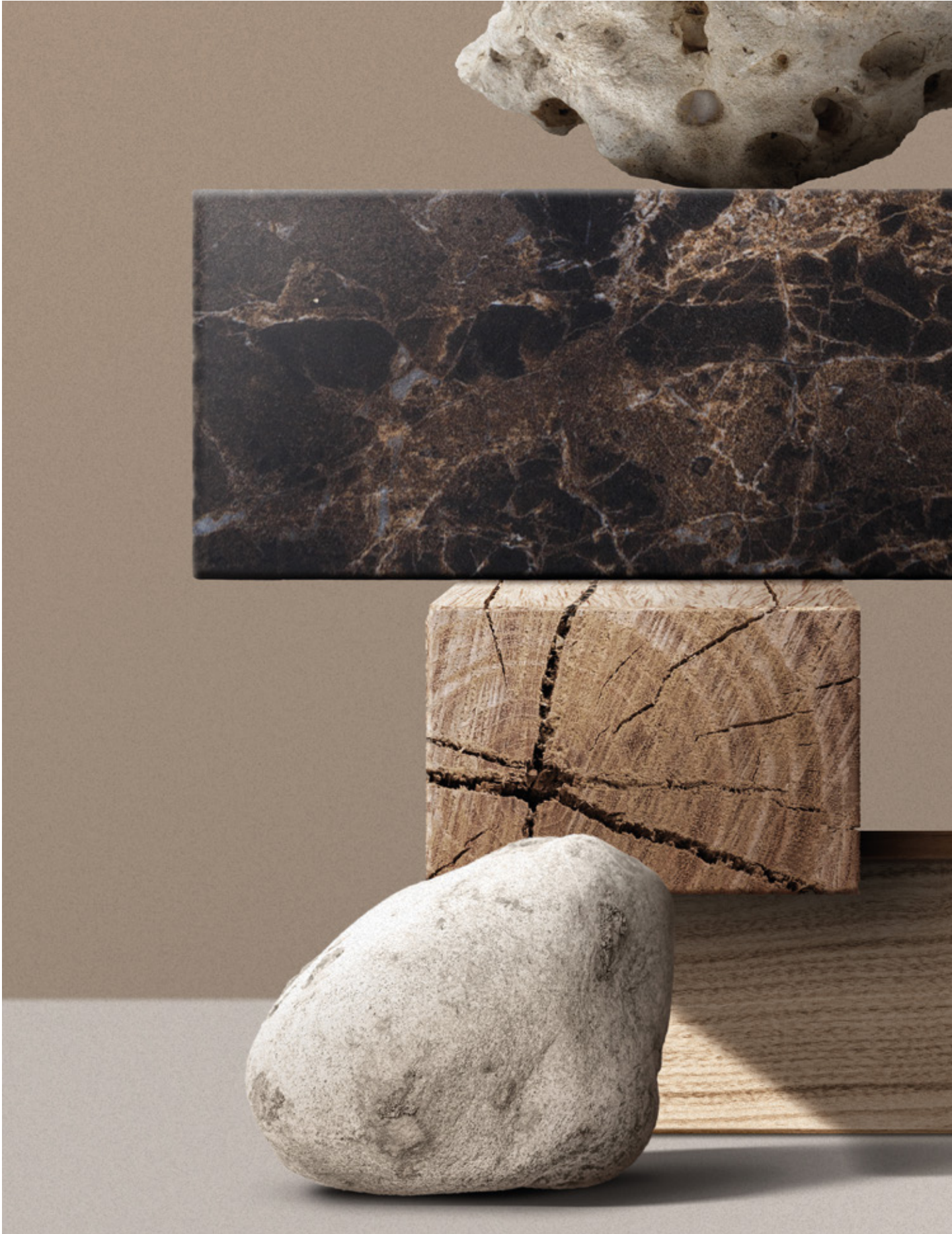
Better Design Through
Craftsmanship &
Innovation.





DESIGN & INSPIRATION

Of course, great manufacturing is wasted without great design. Gloster currently works with several world-renowned designers to create timeless outdoor furniture. Once a concept is approved, designers work closely with the development team at our factory to further refine their designs. And even in this digital age, we insist our designers travel to and spend time at our factory so they get to know our people, our raw materials and our philosophy.



LARS ERIKSEN

Gloster Europe
Managing Director

TERESA NEWTON

Gloster America
Marketing & Textiles Manager.

KUKUH SUYITNO

Gloster Indonesia
Metal Prototyping



WINARTI

Gloster Indonesia
Sewing Technician

MATT ROBINSON

Gloster Europe
Marketing Manager

BUDY SANYOTO

Gloster Indonesia
Head of Timber Production

TRUE CRAFT HAS MANY FACES

TIM COOK

Gloster Indonesia
Product Development Manager



KENT GRAFF

Gloster Indonesia
Managing Director



NGATIONO

Gloster Indonesia
Head of Metal

MOLYONO

Gloster Indonesia
Head of Sawmill

PAUL WALLEVIK*

Founder of Gloster (1933-2018)

*PAUL WALLEVIK

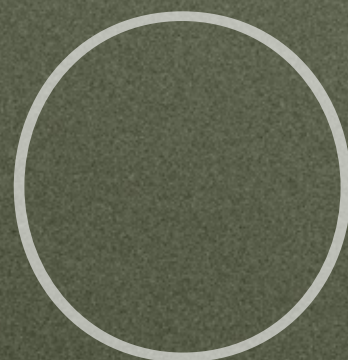
Paul first started producing furniture 57 years ago, based on a foundation of design, quality and attention to detail. Today we honour his legacy by continuing the tradition he established - one of high standards and true craftsmanship.

NOVELTIES

DECK

BORA

NAVIGATOR

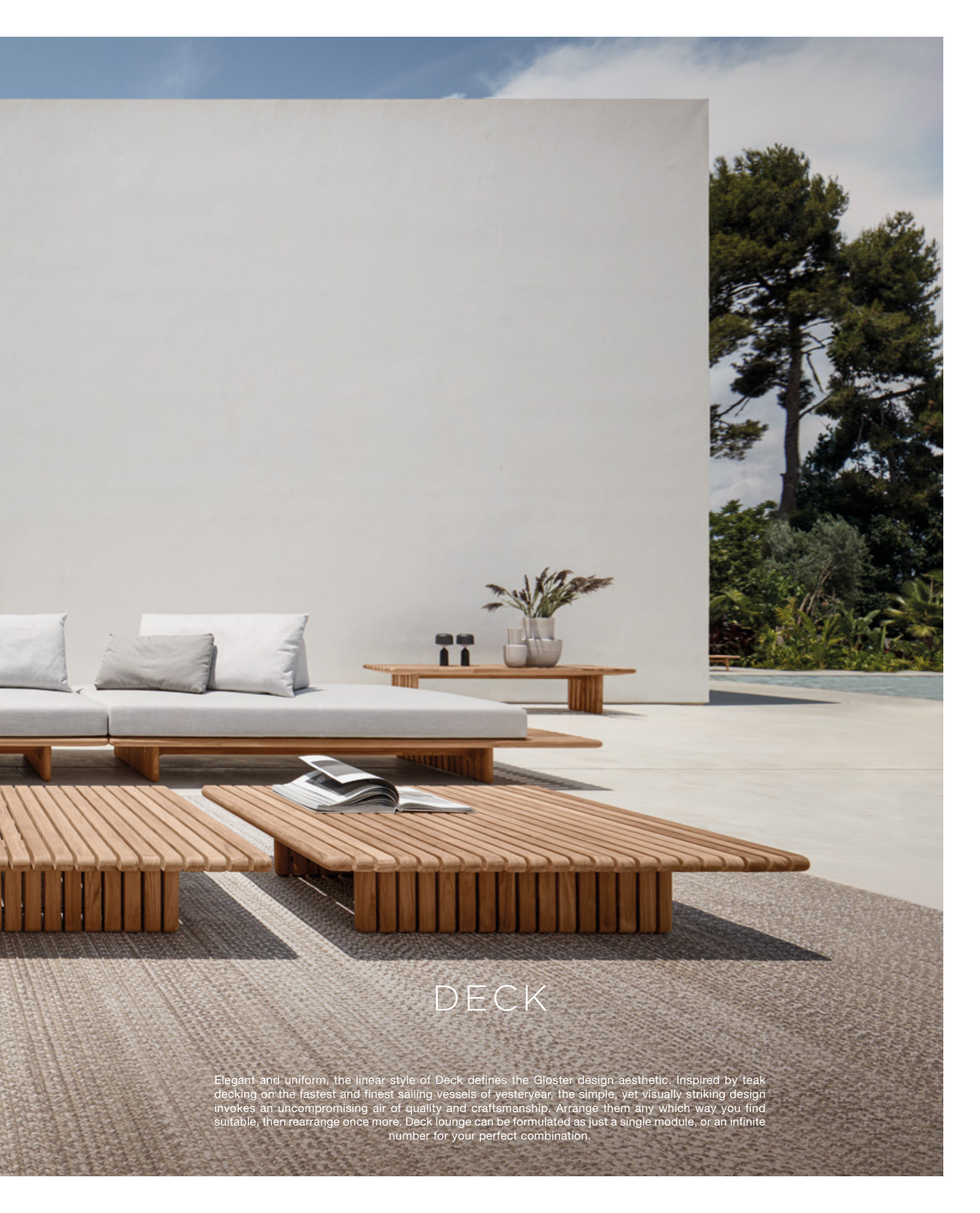


NEW SEASON, NEW COLOURS, NEW FABRICS, NEW DESIGNS AND NEW MATERIALS. ESSENTIAL ELEMENTS THAT COMBINE TO DEFINE CHANGES, NOVELTIES AND INNOVATIONS. CUTTING EDGE DESIGN, INNOVATIVE MATERIALS AND THE APPLICATION OF NEW TECHNIQUES COMBINE TO CREATE PIONEERING FURNITURE COLLECTIONS FOR THE MODERN ERA.



S
L
T
E
N
V
I





DECK

Elegant and uniform, the linear style of Deck defines the Gloster design aesthetic. Inspired by teak decking on the fastest and finest sailing vessels of yesteryear, the simple, yet visually striking design invokes an uncompromising air of quality and craftsmanship. Arrange them any which way you find suitable, then rearrange once more. Deck lounge can be formulated as just a single module, or an infinite number for your perfect combination.



DECK

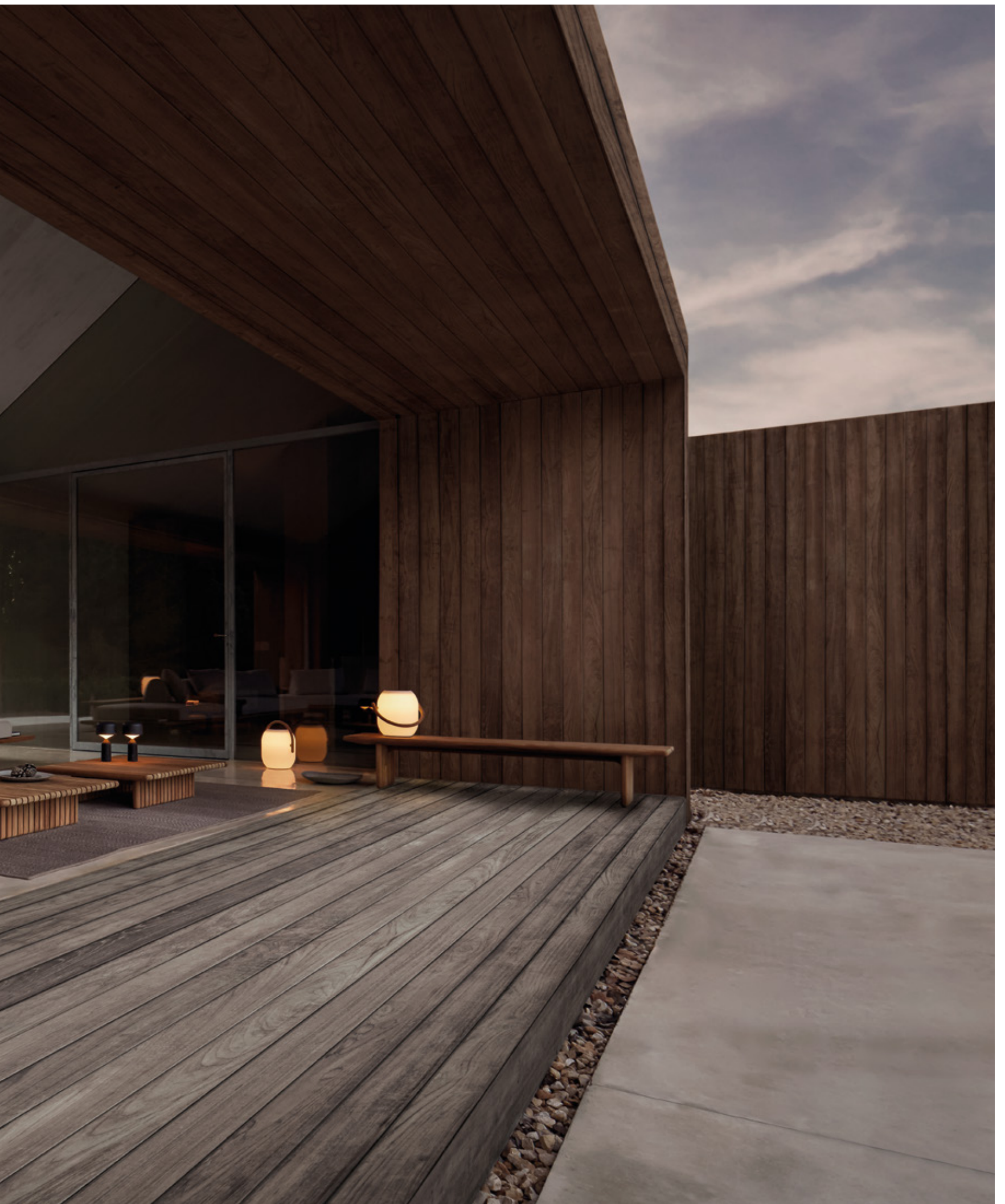
Broad, substantial, trusty and true, a ship's deck is literally the foundation of any voyage of discovery. Perfectly engineered to bear the weight of endless possibility and endure whatever tribulations may be encountered along the way, generous slats of resilient teak have been used for centuries to craft this impromptu footing for weary travellers, bold adventurers and pleasure seekers alike.



DECK

Broad, long teak slats are refined with impeccable precision by talented craftsmen and women. Every section is perfectly straight, perfectly spaced and perfectly finished in a series of complimentary curves. Elegant and uniform, the linear style of Deck exemplifies the Gloster design aesthetic.







DECK

Inspired by the styling cues of the fastest and finest sailing vessels of yesteryear, Deck's simple, yet visually striking design invokes an uncompromising air of quality and craftsmanship.





DECK

Charged with the freedom of movement and possibility, Deck's newly introduced modular lounge furniture perfectly parallels the design language of previously launched Deck dining tables. With an equally unmissable presence, large, low and flat bases provide opportunity for endless seating combinations of unrestricted size.



DECK



Following the same design cues, teak coffee tables and sofa tables complete the Deck modular lounge range and provide additional opportunity for imaginative configuration with size and height allowing for stand-alone statement or seamless integration.







DECK

Substantial, freestanding, weighted backrests and matching sumptuous scatter cushions can be placed as you please, to suit individual preference for a truly tailor-made seating experience.



BORA

A combination of the tactile and the ethereal, Bora alludes to the imposing winds that buffet the Adriatic coast.



BORA

The name evokes a sense of the remote and the exotic, painting a path to the horizon where oceans and skies meet and continents crumble into archipelagos. The Bora collection embraces these flights of fancy, pairing them with functional requirements to flow flawlessly into a form to be reckoned with.







BORA SUNLOUNGER

Bora is available in two wicker combinations – either the bold and dark Umber or a lighter, warmer Sorrel colour.

BORA SUNLOUNGER

Seating for all occasions is provided by a comprehensive range of lounge furniture, including a new lounge for 2024 season.

BORA - a combination of the tactile and the ethereal.

The rounded expression of circles in the woven backs, create a soft and inviting seating comfort. Inspiring trust and guaranteeing stability, a wide, strong stance is artfully formed from plantation teak in a peerless combination of fine craftsmanship and classic, mid-century, Scandinavian style.







BORA

The Bora collection consists of a Dining Chair, Lounge Chair, Sofa, Ottoman and Lounger, all incorporating luxurious seat and back cushions designed specifically for outdoor use. Although using manmade fibres, through a clever combination of individual strands of varying colour and the application of a distressed, tactile finish, Bora's woven element achieves an unquestionably natural simplicity.



NAVIGATOR DETAIL

Ipsapellendus allgeu...
Volurib usdamendi dolum nonsequ ibusaeptata
tatis dem quatus eossint, omnis resed qui
In idelignatur, sum verorepta ducis

BORA SUNLOUNGER

The lines, strength and integrity of Scandinavian design cannot be missed in Bora's signature teak frame.

Natural organic shapes are an obvious match with the outdoor space.



BORA DETAILS

The intricate use of Bora's woven fibres is inspired by island life in a tropical setting.









NAVIGATOR

To pinpoint a desired destination and take an unwavering path towards the identified goal, is the timeless task of the navigator. Pursuing one's adventures with such single-minded clarity invariably leads to inspired and fulfilling adventure. And a similar motivation has undeniably shaped Glyn Peter Machin's equally singular development of the Navigator collection for Gloster.

NAVIGATOR - flowing forms and a unique, inline folding X-frame.

Shaped by memories of a classic era of luxurious travel when adventurers, explorers and ambitious individuals sought portable comfort as they travelled, Navigators elegantly contoured teak frame, brushed stainless steel components and tailored integral cushioning, are contemporary interpretations of vintage campaign furniture.



NAVIGATOR DETAIL

The inline folding X-frames are achieved with ingenious, hidden engineering and paired perfectly with both fixed and articulated, brushed stainless steel junctions - cleverly elevating heritage style to pioneering plush.

NAVIGATOR DINING

Pursuing one's adventures with such single-minded clarity invariably leads to inspired and fulfilling adventure. And a similar motivation has undeniably shaped Glyn Peter Machin's equally singular development of the Navigator collection for Gloster.









NAVIGATOR

The versatility and practicality of folding furniture is transported to a new era through creative styling and sophisticated detailing. Focussed firmly on the 'less is more' principle of product design, both the folding chairs and stowable table that combine to form the chic Navigator trio artfully express traditional Danish Modern influences, with an added flare of opulence.

LOUNGE

HAVEN
GRID
GRID CABANA
MAYA
MAYA COVE
ZENITH
OMADA
MISTRAL
BAY
CRADLE

RELAXATION IS ABOUT PERFECT SPACE. ABOUT COMFORT AND CONVENIENCE. A BLEND OF PERSONAL STYLE AND THE SIMPLICITY OF KEEPING YOUR FAVOURITE THINGS CLOSE AT HAND. SO IT'S NO SURPRISE THAT GLOSTER LOUNGE OFFERS THE INGREDIENTS TO MIX THE PERFECT PERSONAL RELAXATION RECIPE. AND, AS WITH ALL THE BEST IDEAS, SIMPLICITY IS THE KEY WITH OUR MODULAR COLLECTIONS PROVIDING THE BUILDING BLOCKS TO CREATE ALMOST LIMITLESS DESIGN POSSIBILITIES.



U
N
O
L
N
G





HAVEN

Haven. The name alone suggests a hideaway and it's with only the smallest shift of consciousness one can imagine drifting in a calm bay securely cradled by an exquisitely crafted vessel. Lying beneath the sun, one hand tracing the gently curving lines of the graceful hull holding you safe on the still waters of your very own retreat. A cooling breeze invites the sun to dance across the surface of the ocean and the shimmering light signals a personal message that this tranquillity is yours alone to enjoy.



HAVEN



Designed with a nod to the nautical, Haven's solid teak frame combines deep, gently curving slats to create subtly rounded back and side panels, intended to envelop and enclose and create a sheltered and comforting environment in which to relax. This sense of security and comfort is further emphasised with a deep and luxurious cluster of seat cushions and back pillows.





HAVEN

Sebastian Herkner, the German designer of Haven says of his concept "With broad sided symmetry and a graceful hint of yacht-like curvature, Haven conjures a sense of impeccable craftsmanship and serenity. While the profile alone invites maritime musings, explore a little further and you will find this inference of seafaring style is by no means chance."



HAVEN





MIX & MATCH

The freedom of choice is yours...
Confident styling and a strong, simple colour palette combined with
a sophisticated fabric collection, means that the Gloster lounge collection is
more dynamic than ever.





GRID

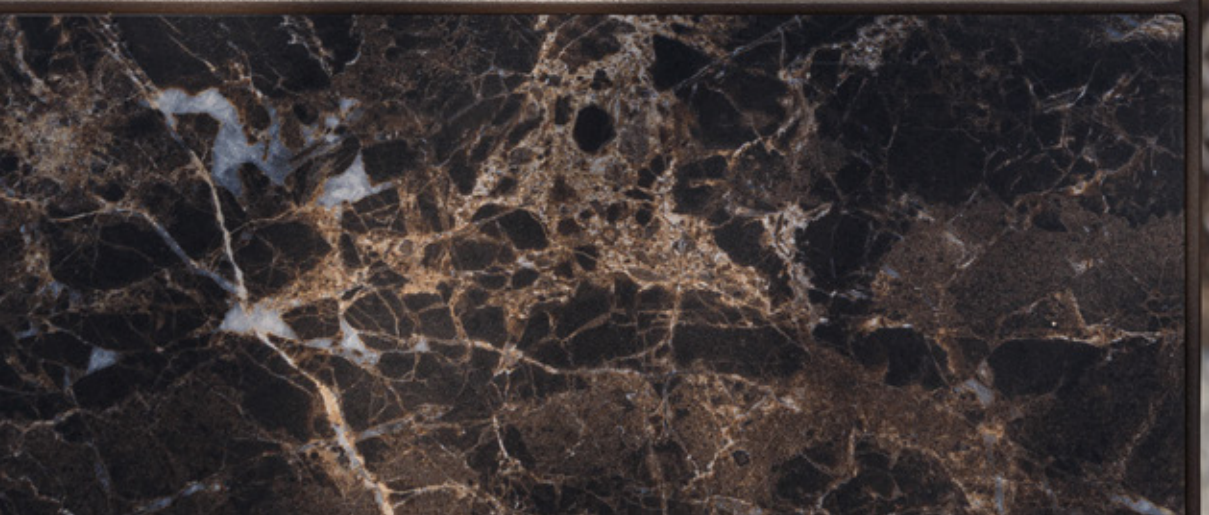
Grid - a name that describes both function and mind-set. A grid of complementary units forms the basis of a totally flexible seating system where you can combine various individual elements to meet your specific needs.

64 | 65









BROWN COLOUR WAY

Choosing the right fabrics and combining the right colours are essential for the right result and we strive to make our furniture collection colour co-ordinated across the individual themes, making it easy for customers to mix and match. Recent additions include a collection of new fabrics to complement the brown colour way introduced for other materials. Our popular Blend fabric series is expanded with a new 'Latte' colour. A new series of Heritage fabrics feature a soft, textured finish - while Hunt fabrics display a subtle, geometric 'check' pattern in contrasting yarns to highlight the warm tone of the base fabric.



BROWN COLOUR WAY

A natural extension of the Gloster colour palette - warm, earthy tones and subtle textures combine in a striking Brown colour collection. Java powder coat, Emperor ceramic, Wren Ombre rugs and Coso tables in Earth colour glaze create a dynamic palette that is both comforting and practical.













GRID

Danish designer Henrik Pedersen conceived Grid as a bridge between stark minimalist design and large scale luxury. By combining slim, aluminium frames powder coated in Meteor or White with the elegant geometric forms of deep and comfortable seat and back cushions, Henrik has surpassed his goal.



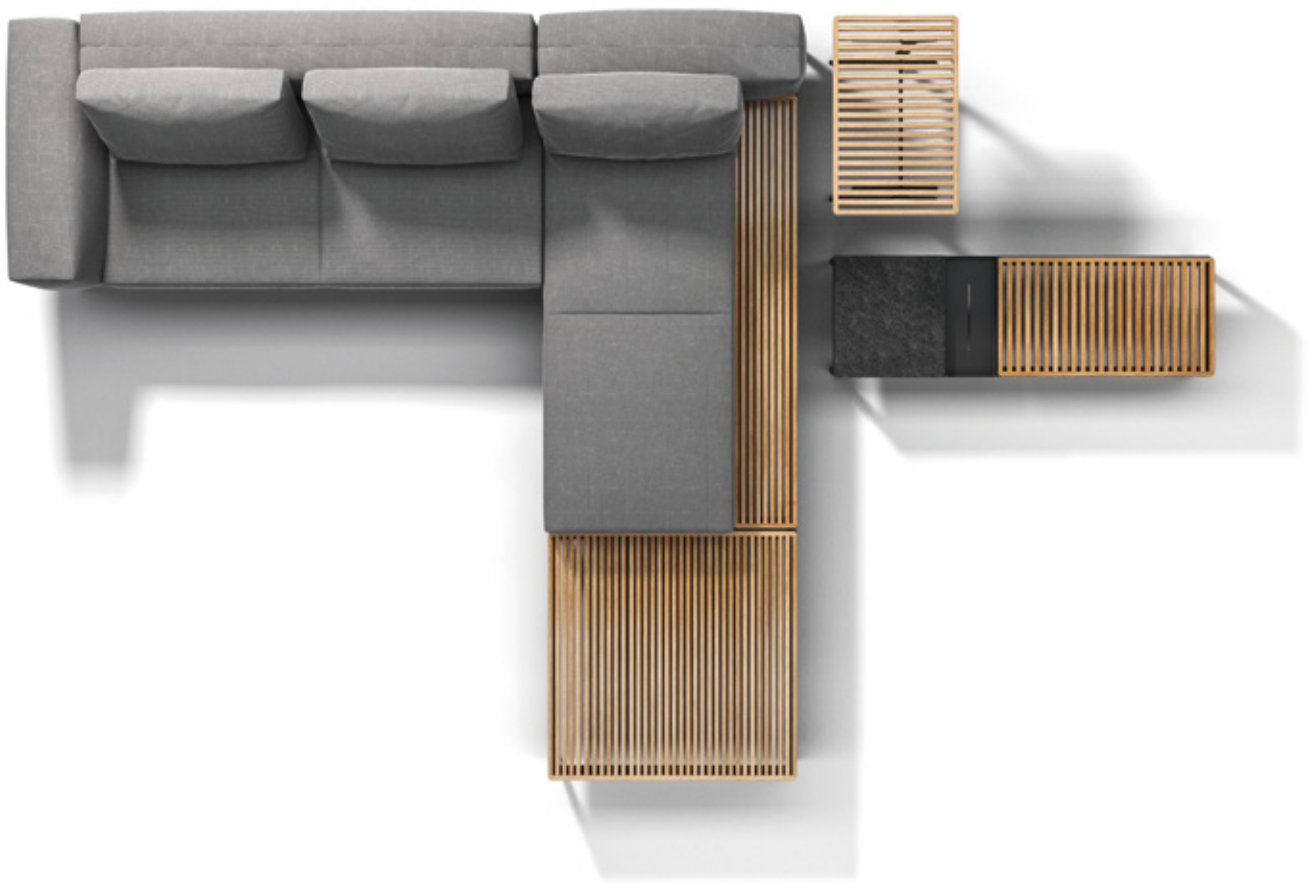






GRID

A Red Dot Award winner, Grid features fully upholstered outdoor cushions in a wide choice of outdoor fabrics. With matching side and coffee tables with slatted teak or durable ceramic tops, the Grid collection screams taste and style with quiet confidence.









GRID CABANA

Sunset to dusk to the rich blue of night; dream hours away sheltered in your own private cocoon far from the madding crowd. Use it as you will; with stylish striped fabrics, luxuriously deep outdoor cushions, oversize pillows and a handy integral shelf for personal effects, Cabana is unquestionably the ultimate outdoor personal space.





ARCHITECTURE

WILL ALWAYS BE A PART OF THE BACKDROP

Open spaces release the heart and the soul. Vast horizons quietly and gently remind us of a freedom lost for centuries. It's no surprise we love the soft dawn, that we wonder at the ruby and amber of a sunset - lost momentarily as the world revolves.

But even nomadic people crave structure. We all need a silhouette against the bright wilderness. A glowing doorway amongst creeping darkness. To step through and to feel at home.



GRID CABANA

Speaking about Cabana, the Danish designer, Henrik Pedersen says; "I hoped to create a shaded and sheltered second home for one, two or more to escape within - the perfect vessel in which to cast yourself free."

88 | 89



MAYA

When the Cloud range was launched in 2010, it incorporated new thinking and technology in the design of the upholstered elements and made these as comfortable as their interior cousins. Cloud not only invented the 'outdoor lounge' category, it went on to define it. So how do you improve this? It is often easier for a designer to start again rather than take an existing design and make it better. This was the challenge; the gentle, but meaningful evolution of an existing idea. To distil and keep the spirit of the original, but refresh the aesthetic and expand its possibilities.









MAYA



Maya frames feature an ultra-slender powder coated aluminium profile connected to cast aluminium legs. Side and back cushions are subtly revised in profile and detail and additions to the range include console tables and planters that allow for a series of living landscapes to be created outdoors.









ZENITH



The Zenith collection marks the peak of the Gloster design aesthetic. A blend of diverse materials combine in a lounge collection that is simple, yet striking. Modern yet familiar. Luxurious yet practical.





ZENITH

As the sun's arc describes another day, fleeting clouds and spreading shadows create a patchwork of light and shade. Pushed and pulled by transient light, breezes dip and roll alternately soothing, then interrupting moments of calm. Days outdoors will always bear the weight of uncertainty. There is no perfect solution. But there is a way to move with the elements - to embrace each changing instance to its fullest.





ZENITH

Zenith's designer, Henrik Pedersen is driven by reaching for the heights of fine design, declaring; "This is all about the very top - the peak of comfort. The summit moment of your day. The perfect combination of considered design and perfect materials delivering a flawless experience. So of course, what name but Zenith could suffice?".



ZENITH

Conceived by Danish designer Henrik Pedersen, the Zenith collection consists of a stylish Lounger, matching Lounge Chair, Lounge Chair with Arms and Ottoman. All pieces are based on a softly profiled tubular aluminium frame offering a perfect balance of strength and style which is finished with a resilient Meteor colour powder coat. Seats and backs are formed in one continuous plain from hand woven, subtly textured Wheat colour outdoor wicker and topped with luxurious partitioned seat pads available in a variety of weather resistant fabrics.









OMADA

Alone or together under the vibrating blue of an uninterrupted coastal sky or the impenetrable luxe black of a pastoral fireside night, casual comfort is assuredly the most significant ingredient in the satisfactory confluence of circumstance and situation. Soft, indulgent seating with space to sit, curl or lie combined with a generous single seat configuration that can be grouped - should occasion demand - with irreverent ease, can only add to the perfect enclave.



OMADA

The subtly integrated upholstered cushions and Omada's generous proportions suit an indulgent moment alone or a cosy time for two. Allow for personal space or larger groups by simply placing additional units side by side, face to face, or however you wish.

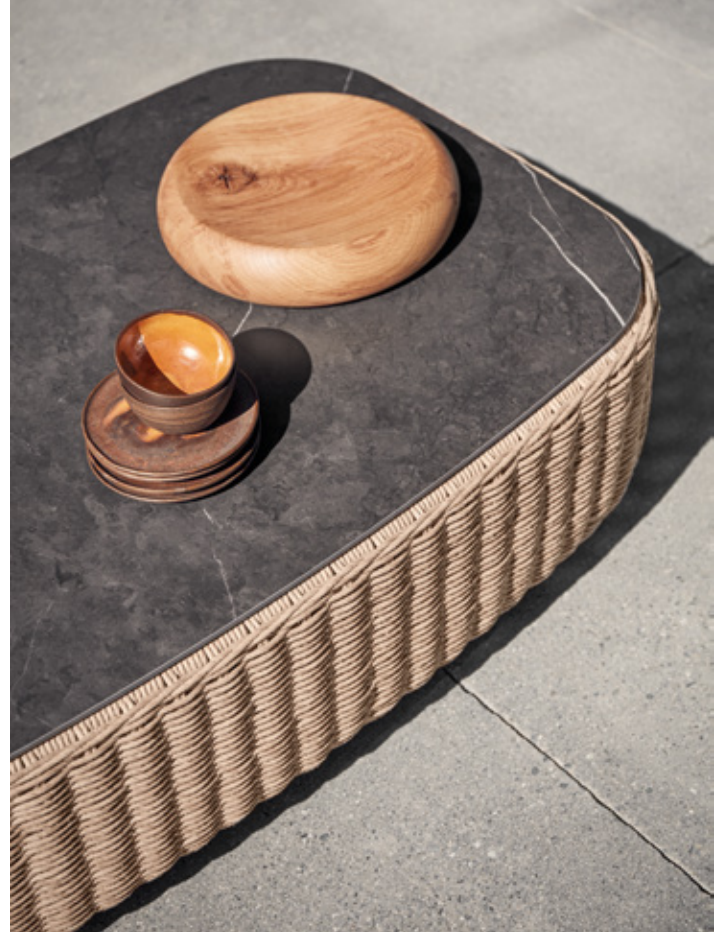






OMADA

Freedom to choose is a definitive attribute of luxury. But choice should not be confused with limitless opportunity” muses London based designer Mark Gabbertas. “Sometimes simple form and the opportunity to combine any number of similar shapes inspires the most impressive results. Omada invites the breath-taking simplicity of original thought - and rewards with uncompromising comfort.





CASA NO TEMPO

Step away. Away from the film reel, the colour, the noise, the life. The series of frames flashing by... moments partitioned by the edges of other moments. The overwhelming spool of progress.

Stop. And turn. Turn off the majority route - follow the map of your heart. Free your hands from technology. Trail your fingertips through the tall grasses and kick up the dust along the way. Note the small things; footprints in the dirt, flowers in the sun. Meander towards your haven.

Conceived as a perfect balance between setting and statement, Casa no Tempo nestles at the end of a magical trail through Portugal's Alentejo region. The home is not just a renovation. It is the absolute rejuvenation of a ruined family enclave. Commissioned by the Grandfather of descendants to whom the surrounding savanna belongs, this shining phoenix rises proudly amongst the wildflower grassland.

Floor to ceiling glass pivots silently, effortlessly - opening all living space to the veld as brothers João and Andreia Rodrigues specified with the help of architect Manuel Aires Mateus. A short walk from the high ceilings and sunken fireplace of the tasteful interior leads to an imposing infinity pool scooped artfully from the plain.

And of course, in all this open space, the final focal point and comfort - beautifully crafted outdoor furniture, Grand Weave by Hendrik Pedersen for Gloster.

This is it. Away from the hustle. The only intrusions are grasses rustling in the wind, bird calls. The only pressure is barometric as the weather and horses race in parallel, unbridled across the open land. Lie back in comfort, and marvel as behind you your haven glows. The night sky deepens, starlight rushes earthwards and the moon dances on the lapping water.

This is why. This is what you have missed. This is not just living - this is being.







MISTRAL

Curl up in a soft landscape of upholstery and cushions partitioned and protected by impeccably handcrafted wraparound screens. With a perfect balance of subtle and sophisticated details, the Mistral seating group is designed to complement rather than control the surrounding aesthetic. With its pleasing chorus of symmetrical curves and a natural, neutral palette of colours, fine lines and delicate details abound in this low-key style collection from Gloster.





MISTRAL

Henrik Pedersen, the Danish creative behind some of Glosters' most successful furniture collections, likens his latest design Mistral to a small, standalone hideaway. But mindful that island life can be lonely, Henrik suggests combining several units; "like a small, private archipelago where you seek refuge and hang out in lazy summer days".









An elegant combination of essential materials, Mistral is comprised of a tapered plantation teak platform supported by gently curving cast aluminium legs. Stylish, upholstered cushion pads provide luxurious comfort with a distressed finish, Koala colour outdoor wicker back panel to complete the look.

BAY

Can you recall that sense of escape? Of finally leaning back, forgetting your worries and staring out across the water towards the setting sun? Henrik Pedersen set out to capture the feel of sitting by the coast when designing the Bay collection. The reclined position emphasises an introspective and relaxed state of mind and is intended to create a sense of being at rest in a safe-haven.







BAY

Suitable for quiet family times and day to day life for the style conscious, the vintage lines of Bay's frame are crafted from Gloster's impeccably finished teak combined with upholstered outdoor fabric cushions. A matching slatted teak coffee table and side table complete this timeless collection.











BAY

Whether single statement piece or complete collection, slender minimal slings or deep seating indulgence, Bay represents a step into a simpler world. Take a moment to lie back and enjoy the view.



CRADLE

It's all about creating defined rooms, your own private oasis in the outdoor area, but still open and exposed to the elements - with a sense of enclosure. Luxurious for one, but big enough for two.

Indulgently conceived by the talented eye of respected Danish designer Henrik Pedersen, Cradle is the epitome of luxury. More than large enough for two, Cradle surrounds and comforts. With a selection of shades, privacy can be adjusted to suit. A variety of finish and fabric options as well as an integrated side table mean you can create your very own haven.







DINING

BORA
KASHA
DECK
GRID
CARVER
WHIRL
WILLIAM

TABLES CAN BE LARGE OR SMALL, SOCIAL OR INTIMATE. SHAPES RANGE FROM ROUND, THROUGH SQUARE TO RECTANGULAR - SOME CAN EVEN FOLD UP FOR WHEN STORAGE IS LIMITED. ALL IN ALL, THE TABLE HAS QUITE A JOB TO DO, SO JUST AS WELL WE OFFER A WIDE VARIETY OF OPTIONS TO HELP FIND THE ONE THAT IS PERFECT FOR YOU.

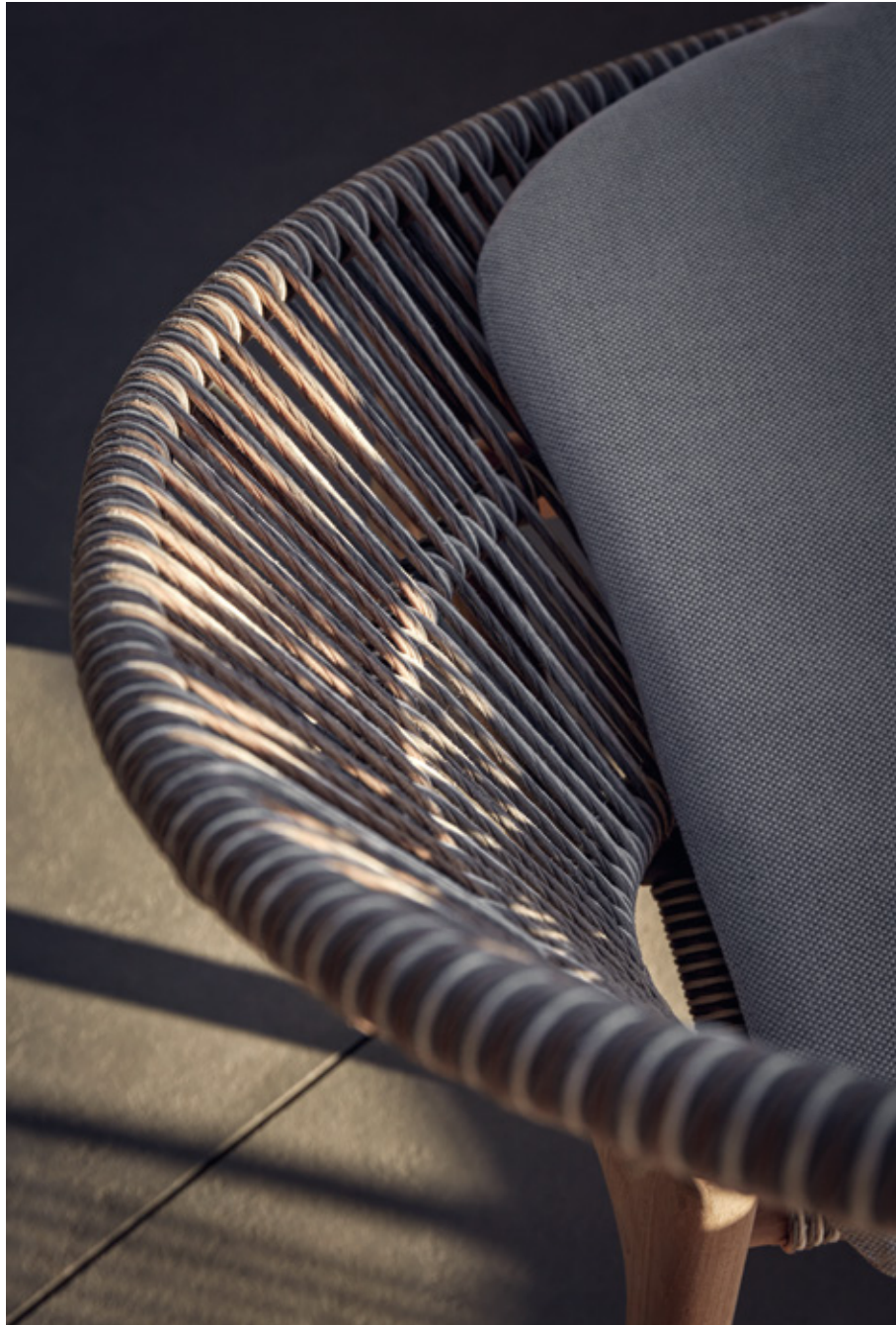
AND THE PERFECT CHAIR SHOULD NEVER GO UNNOTICED IN THE FRAY OF A SOCIAL OCCASION. EASY TO MOVE AND COMFORTABLE FROM FIRST SIT TO LAST DRINK OF THE NIGHT YOUR SEATING SHOULD BE THE PERFECT ACCOMPANIMENT TO ANY EVENING. WHETHER MODERN OR TRADITIONAL, CONVENIENTLY STACKING OR DESIGNED TO ENDURE, EACH CHAIR HAS ITS PLACE.



I
N
D
N



BORA



Although using manmade fibres, through a clever combination of individual strands of varying colour and the application of a distressed, tactile finish, Bora's woven element achieves an unquestionably natural simplicity.











DECK

Crafted from solid plantation teak, the linear style of the Deck tables defines the Gloster design aesthetic. Inspired by teak decking on the fastest and finest sailing vessels of yesteryear, the simple, yet visually striking design invokes a uncompromising air of quality and craftsmanship.



DECK

Broad, substantial, trusty and true, a ship's deck is literally the foundation of any voyage of discovery. Perfectly engineered to bear the weight of endless possibility and weathers, whatever tribulations may be encountered along the way, generous slats of resilient teak have been used for centuries to craft this impromptu footing for weary travellers, inspired adventurers and pleasure seekers alike.

While the sheer scale of Deck dining tables alone would be sufficient to explain this seafaring appellation, the slightest glance will reveal there is so much more that inspires this imposing synergy. Immaculately parallel lines of teak race top to bottom of Decks broad legs and flow into the expansive top in a feat of engineering beyond compare. These broad, long slats are finished with impeccable precision by talented craftsmen and women in a series of complimentary curves. Every section is perfectly straight, perfectly spaced and perfectly finished.





GRID DINING

Relaxed dining and a long evening chill out. The classic and comfortable Grid sofa, now evolving from purebred lounge form into a superbly comfortable and low slung dining collection.

152 | 153



GRID DINING

Grid – a name that describes both function and mind-set. When functionality is key and simplicity is a priority, Grid's elementary format is the perfect solution for deeply comfortable seating in a stylish world.





CARVER

In the same way that an artist carves in stone or wood to create a unique form, the same way of thinking has been applied to the Carver tables, where the cross-rail and legs have been subtly sculpted, like pieces hewn from a solid block.







CARVER

Carver tables are expertly fabricated using extruded aluminium which is then finished with a durable powder coating in Java, White or Meteor colours. A cleverly designed corner casting ensures absolute stability despite the apparently delicate appearance.

CARVER

Carver tables are available in four sizes with either stylish horizontally slatted, teak or one-piece ceramic tops in either Nero, Bianco or Emperor colours.







CARVER

Designer Henrik's statement is to the point: "In the same way that an artist carves in stone or wood to create a unique form, the same way of thinking has been applied to the Carver tables, like pieces hewn from a solid block." It's easy to see this inspiration... where the cross-rail and legs have been subtly sculpted it doesn't take much to imagine the space between being solid before the legs and frame are skilfully cut with delicate angles.



CARVER - generous proportions and versatility.

Simple, light, and minimalistic. Carver is design icon, that interact aesthetically with both architecture and the natural outdoor environment.



CARVER DINING

Like a visual harbour, accommodating a free and open layout. A comfortable match for a variety of style directions, due to the well-defined lines, and strong focus on the details.



CARVER DINING

A choice of materials and colours, makes it an essential focus point, where the nature of the function and the design, goes hand in hand with the tactile surfaces.





WHIRL

As the name suggests, Whirl by Danish Designer Henrik Pedersen is predominantly round. The signature table is of course based on a full disc - without a beginning or an end, as Pedersen says; "The perfect template for creating a place where you can come together and communicate freely. Indeed, the ideal shape for a table."





WILLIAM

The chair designed to fit like a glove. Light, powder coated frames carry the signature, curved teak slats that define the design language of William. And where your hands meet the frame, once again soft teak provides the touch.



COLLECTIONS

BORA

LIMA

FERN

SARANAC

KAY

FRESCO

SWAY

ARCHI

RAW™

180

CL

ALL OUTDOOR FUNCTIONS COVERED IN OUR CLASSIC, ENDURING COLLECTIONS. FROM DINING TABLES AND CHAIRS THROUGH TO SEATING AND LOUNGING, THE CORE GLOSTER COLLECTIONS OFFER A WIDE CHOICE OF STYLE, MATERIALS AND FUNCTIONALITY. SIMPLY SELECT YOUR PREFERRED STYLE AND CHOOSE FROM A VARIETY OF PRODUCTS IN THE KNOWLEDGE THAT EVERYTHING HAS BEEN CONSIDERED AND OPTIMISED TO ENSURE PERFECT INTEGRATION.

N

LEE
STUDIO



BORA

A combination of the tactile and the ethereal, Bora alludes to the imposing, climatic winds that buffet and ruffle the Adriatic coast. Simultaneously the name evokes a sense of the remote and the exotic, painting a path to the horizon where oceans and skies meet and continents crumble into archipelagos.

BORA

Bora combines the fine craftsmanship of an expertly crafted teak frame with the rounded expression of circles, extended to a soft and inviting seating comfort. The tactile and visual effect of a multi coloured weave completes the look.







BORA

The rounded expression of circles in the woven backs, create a soft and inviting seating comfort. Inspiring trust and guaranteeing stability, a wide, strong stance is artfully formed from plantation teak in a peerless combination of fine craftsmanship and classic, mid-century, Scandinavian style.



BORA

Seating for all occasions is provided by a comprehensive range of Dining Chair, Lounge Chair, Sofa and Ottoman. All are available in two wicker combinations – either the bold and dark Umber or a lighter, warmer Sorrel colour, and incorporate luxurious seat and back cushions designed specifically for outdoor use.









BORA

Champion of many Gloster designs, Dane Henrik Pedersen offers an insight into the emotional origins of Bora; "In a sense we are combining the spirit and style of contrasting coastal cultures. A little from this sea, a little from that. The lines, strength and integrity of Scandinavian design cannot be missed in Bora's frame but the intricate use of woven fibres is different. They are inspired by island life of a much more tropical setting. Maybe it was the Bora winds that tumbled these materials together" he smiles.





CERCAL HOUSE

In a rural niche of southern Portugal, a beautiful tale plays out. As the clock turned and trade evolved from task to tourism, school friends became architect and client. The strength of the bond translated to a special understanding in the commission. As a result, Cercal House, nestled into the undulations of a long dry water course, combines an intimate collection of details hidden from the world.

And the perfect furniture to complement this striking rural retreat? Lima modular seating by Henrik Pedersen complemented with Ambient Mesh outdoor lighting.

LIMA STORAGE CHEST & SERVING TABLE



Practicality combines with fine design with the Lima storage chest and serving table. Two elements defined in the same dimensions, yet catering for very different requirements.

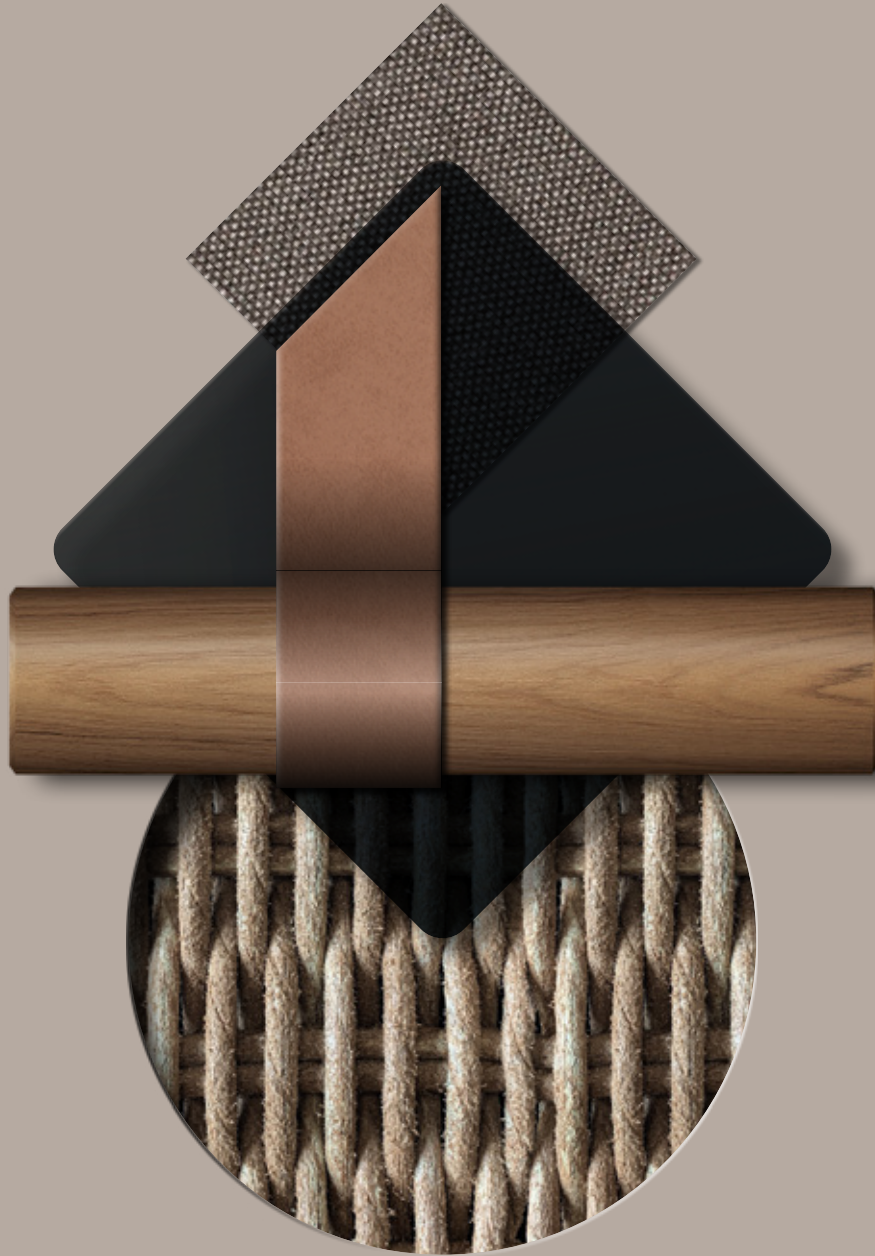








LIMA



Plantation teak, outdoor wicker, natural leather and soft-to-the-touch, textured fabrics combine in a subtle mix, where you can sit down, hang out, and feel the warm embrace of nature.





LIMA

With practicality always in mind, the simple flexibility of the Lima modular elements ensures that you can configure your hideaway however you like. A generous, sociable seating set or a more intimate chaise-longue or sofa - with Lima the only limitation is your imagination.

LIMA



As an extension to the existing Lima seating collection, Lima Dining talks the same design language – one of simplicity, honesty and a deep sense of quality and genuine craftsmanship. An expression rooted in the Scandinavian tradition, where warm, natural and tactile materials are combined in a simple but aesthetic unity.









LIMA DETAIL

Lima Dining talks a design language of simplicity, honesty and a deep sense of quality and genuine craftsmanship.

LIMA DINING

An expression rooted in the Scandinavian tradition, where warm, natural and tactile materials are combined in a simple but aesthetic unity.









LIMA DINING

The Lima collection, which has a strong and clear reference to Nordic design traditions, is now complemented by a new bar chair and ceramic top dining tables.

LIMA - the only limitation is your imagination.

Plantation teak and outdoor wicker combine in a subtle mix, where you can sit down and feel the warm embrace of nature.





LIMA

The essence of natural and tactile materials are brought together into one, defined element. Plantation teak and outdoor wicker are combined in a subtle mix with nature very much in mind throughout the whole design. The variegated colour all-weather wicker features a subtle, distressed finish - giving the furniture a familiar and rustic feel.

200 | 201



FERN

The Fern collection is available with seat and back cushions available in a wide selection of soft-to-the-touch fabrics designed by Sebastian Herkner, who worked directly with Glen Raven and Sunbrella in the United States to create a collection of unique outdoor fabrics that both embrace and support for the ultimate comfortable and cosy seating experience.







FERN

Fern features Gloster's signature buffed teak base frame married to a tough, powder coated aluminium back rest, expertly hand-woven with soft-touch, outdoor rope. Available in two different colour-ways - Meteor colour frame with Raven colour outdoor rope or White colour frame with Dune colour outdoor rope, there is both a style and a colour pallet to match every environment.





FERN

Inspired by the delicate fronds of a unfurling fern leaf, the Fern range by Sebastian Herkner is an imposing, yet cosy lounge range with a design language that harks back to nature.

206 | 207



FERN



Combining Gloster's signature plantation teak with a soft finish outdoor rope, the enveloping, woven back rest both protects and provides the comfort and is attached to a typically Scandinavian style teak frame, which mirrors its contours and underlines the comfort aspects. Two heights of the backrests give the Fern collection two distinct characters - a sumptuous, low lounge chair and a more intimate high back wing chair.







SARANAC







SARANAC

Invoke memories of slower times and a different pace of life. Riverside, lakeside, seaboard. Bounded with cinematic landscapes, giant redwoods and cavernous skies. Imagine the perfect temperature, a moment in the day when nothing intrudes. Add comfort of an unprecedented level packaged with definitive style and premium materials. Picture this luxury outdoors. Without the constraints of four walls, where instead your limits are the horizon and an ever expanding canopy, pinned with infinite stars.





SARANAC CHAISE





SARANAC

Imagine the perfect temperature, a moment in the day when nothing intrudes. Add comfort of an unprecedented level packaged with definitive style and premium materials. Picture this luxury outdoors. Without the constraints of four walls, where instead your limits are the horizon and an ever expanding canopy, pinned with infinite stars.



SARANAC

Showcasing a solid teak frame with a gentle nod to mid-century influence, Saranac's distinctly contemporary lines please the eye from all angles allowing the collection to appear equally at home in spaces of varying size.







SARANAC

London designer Mark Gabbertas spared nothing to ensure Saranac's sustainably sourced, historically influenced frame incorporated the finest materials and delivered the most sophisticated finish. A woven outdoor rope back in rich Raven colour is strung taut above gently angled and tapered legs. Backs and arms are fully refined with a tactile rounded teak cap.

222 | 223





INTO THE WOODS

Anchored to a Braga hillside high above the Cávado River this concrete, glass and timber fortress protects its occupants from the world behind cantilevered shutters. The only interference, a chattering mountain stream - winds through the architecture to spill from a naturally filtered pool - escaping beneath a vast terrace in the expansive gardens below.

For all its presence, this striking family home by firm Carvalho Araújo, hunkers down amongst old winding roads and hillside plots - almost disappearing amongst the tall eucalyptus. Only upon entering this imposing sanctum can you really appreciate its scale.











KAY

The Kay collection is comprised of two and three seater sofas, dining chair, lounge chair, rocking chair, lounge and ottoman. High and low variations of the back panel are available as options and can be used to create a fully consistent level or a variation in back heights depending on how you wish to style your space.





KAY DINING

Kay combines weatherproof and durable materials with a timeless teak frame to create a collection that's both comfortable and welcoming.

KAY – comfort combines with effortless style.

With a dramatically curved back, Kay by Henrik Pedersen makes no secret of the defining factors in the design.



KAY DETAIL

Colour matched seat and back cushions are constructed using all weather padding and fabrics.

KAY AND WHIRL DINING

Plantation teak and outdoor wicker combine in a striking combination.





FRESCO

Twinkling lights pierce a fading sunset on the Riviera. Light and mist vie for dominion of silvery Malibu dawns. Black basalt cobbles radiate warmth as street-life spills into the twilight of a Rome evening. From early in the 1960's, these locations have shared something unique. A certain light, an air, a 'joie de veuve' that captured the imagination of early pioneers of design and experience and continues to draw those with an appetite for refinement and exploration today.

Designed by Matteo Thun, Fresco embraces this spirit and style, re-invigorating it with new materials for the current generation of sun seekers and socialites. Combining all of the chic of yesteryear with the benefits of environmentally friendly processes, durable yet comfortable and practical materials and meticulously handcrafted detail.













FRESCO



Fresco picks up on the spirit of the 1960's - the timelessness, the ease and the elegance of terraces in Rome, Aspen, the Riviera and Malibu at that time. The light, almost floating seat element on the white, powder-coated aluminum frame resembles a shell and results in an organic and ergonomic shape.



SWAY LOUNGER

With Sway, Danish designer Henrik Pedersen combines a finely proportioned teak frame with a practical sling seat and back to deliver inherent sprung comfort. A striking new lounge element is a recent addition to the collection.





SWAY

Henrik Pedersen says: "In outdoor situations we often spend more time relaxing and lounging, and when dining we tend to take our time. So why not make the situation as comfortable as possible?" With Sway, the Danish designer has combined a finely proportioned teak frame with a practical sling seat and back to deliver inherent sprung comfort despite an extremely minimal profile.





SWAY – a collection of contrasts.

The combination of tactile woodwork, and the super-slim expression of a soft textile sling, makes for high comfort without any visual compromise.



SWAY DINING

Visually strong enough to stand alone, but equally suited to a larger arrangement, the combination of wood and metal, makes Sway visually versatile. A match for both wood, stone or metal tables in any architectural setting.



SWAY DINING

The difference is to be found in the details – where soft wooden structures come together with the more ridged, metal elements.







ARCHI

Renowned Danish designer Henrik Pedersen combines two simple materials to produce a Lounge Chair that defines the concept of understated elegance. As Henrik says, “The challenge of this design was to create a complex solution from the simplest palette – almost to create everything from nothing. I wanted to create the purest form of seating with the most traditional of materials and yet attain both comfort and a design statement that surpassed more opulent routes”.






GLOSTER RAW™



ARCHI & RAW™

Be unique. Raw furniture proudly displays every growth ring, every knot and every graceful ebb and flow of the wood grain formed as each of Gloster's plantation grown teak trees mature. A story of passion told over as many as 70 years of growth, you can share the journey with the Raw furniture collection.



ARCHI - lines creating shapes.

Archi is a statement of sublime craftsmanship, but at the same time a minimalist wooden chair. Details are the focus point, allowing for the wrapped backpiece to be centre stage and the visual identity for the whole Archi collection.



ARCHI DINING

The curved and angled back are the core factors for a soft and natural landing. The rounded back piece catches you in a welcoming way, and the use of rope as an upholstery material gives the impression of outdoor performance and indoor expression.





GLOSTER RAW™

In normal mass production, timber is regulated, ordered, standardised to conform to strict manufacturing parameters. But with the Raw concept, we celebrate the unpredictable and revere the irregularity of nature. Raw furniture proudly displays every growth ring, every knot and every graceful ebb and flow of the wood grain formed as each of Gloster's plantation grown teak trees mature.





180

Henrik Pedersen is no stranger to simple practicality. The respected Danish designer has cleverly emulated lines of traditional wooden furniture using powder coated aluminium and weatherproof sling to create both the stand out 180 Stacking Chair and the equally impressive 180 Stacking Lounge Chair. Followed with the equally attractive and no less practical matching Stacking Lounger, all are available in a variety of finishes. Henrik says “Travelling, exploring and being inspired by the moment are essential to being able to see beyond tomorrow.”



180

Starting with a simple chair, the no-nonsense lines of 180 have the hallmark of a functional favourite. With clearly matching design cues, a comfy lounge chair and lounger compliment this popular aluminium and sling collection. The same delicate geometric lines and straight-forward stacking system is applied to all pieces.

262 | 263





180 - Strict and functional lines to match any modern architecture.

With a silhouette almost like a sketched line, tracing an ergonomic contour, 180 makes a visual statement for how form and function can come together.



180 DINING

Simplicity and a clean expression, makes the 180 chair the ideal choice for any dining setting. Equally at home in a small setting or scale up to make a bold statement.









DECO

AMBIENT
FIRE BOWL
PARASOLS
GARDEN SHOWER
SEPAL
COSO
BLOW
BLOCK
BELLS
RUGS
FABRICS



WHAT IS A HOME WITHOUT A FEW UNIQUE ENHANCEMENTS TO ADD THAT FINAL TOUCH OF STYLE? SOLAR POWERED, WIRELESS OUTDOOR LIGHTING, HEAVY DUTY OUTDOOR RUGS, DUAL-FUNCTION STOOLS / SIDE TABLES AND A RUSTIC BASKET TO KEEP SMALL ITEMS SAFE AND AT HAND. COMBINING TACTILE MATERIALS WITH BEAUTIFULLY DETAILED FINISHES, THE DECO RANGE OF OCCASIONAL ITEMS IS THE STYLISH WAY TO BRING YOUR OUTDOOR EXPERIENCE TO LIFE.

DEED

AMBIENT SOL

From daybreak to dusk we are illuminated, comforted and inspired by our nearest star. An imposing disc, its appearance beyond the horizon is synonymous with positivity, growth and new beginnings. Its gleaming arc has inspired awe since time began and as its daily cycle nears completion, the world is united in appreciation of its beauty.

Like its solar namesake, Sol's presence heralds a wonderful day ahead. But in a narrative shift, as the day lengthens, Sol only shines brighter. A stylish and dramatic shade by day, a beautifully integrated LED light unit provides subtle illumination as evening approaches and the shadows fade into night.







AMBIENT SOL

Available with either a Meteor or White powder coated, aluminium frame, Sol's canopy is formed using Sorrel wicker, a strikingly satisfying combination of naturally textured and variegated fibres, hand woven to achieve a lattice effect that results in an enticing dappled shade instead of the solid shadow cast by traditional fabric canopies.



AMBIANCE

Light extends the scope of outdoor living and is an essential part of the Gloster collection. Our portable lights create the right ambiance and set the mood for an overall warm and cosy experience in almost any outdoor space.



AMBIENT RAY

Like the beams of sunlight breaking through gathering clouds, the Ambient Ray lantern both illuminates and inspires. Expertly crafted from fine sections of rounded teak and topped with a natural leather handle, this striking, yet practical outdoor light is the perfect addition to any outdoor space.





AMBIENT PEBBLE

Danish Designer Henrik Pedersen says of his creation; "with its friendly shape and natural textures it's hard not to personify Pebble. So why not invite pebble, invite ambience, invite warmth into your home and see if your evenings and your laughter last a little longer?"

278 | 279



AMBIENT PEBBLE

With little consideration for the clock, these friendly looking sentinels stand proudly in any setting. The satin finish of their marbled, natural stone bases in Carbon or Fire pairs perfectly with the subtle texture of the resilient Meteor or Terracotta powder coated surface of their gently curving aluminium shades.





PEBBLE LIGHTING

Light is a major part of creating any setting, and especially for outdoor spaces. A multitude of lights can define an almost imaginary room, like small cosy beacons in the dark.

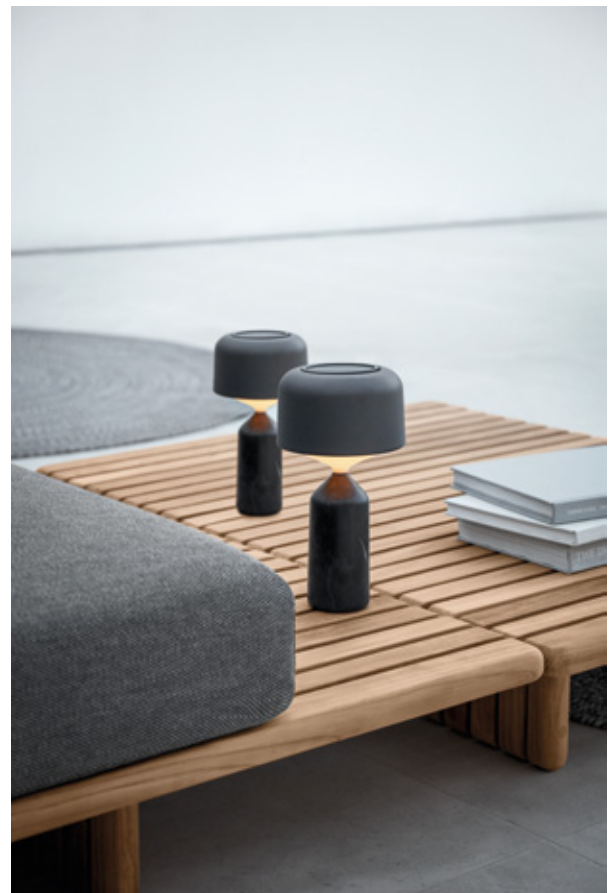


PEBBLE - discreet dimensions with a big impact.

While being the smallest member of the Ambient family,
Pebble still makes a strong visual impact.

PEBBLE LIGHTING

A small icon on it's own, but just as great in a group. Any kind
of repetition is indeed ideal for the Pebble lamp.



AMBIENT LINE

Elegant and precious. Using a mouth-blown, smoked glass cylinder with retro styled ribbed glass detailing and a cast metal frame, Ambient Line by Sebastian Herkner is a classical solution to portable outdoor lighting.

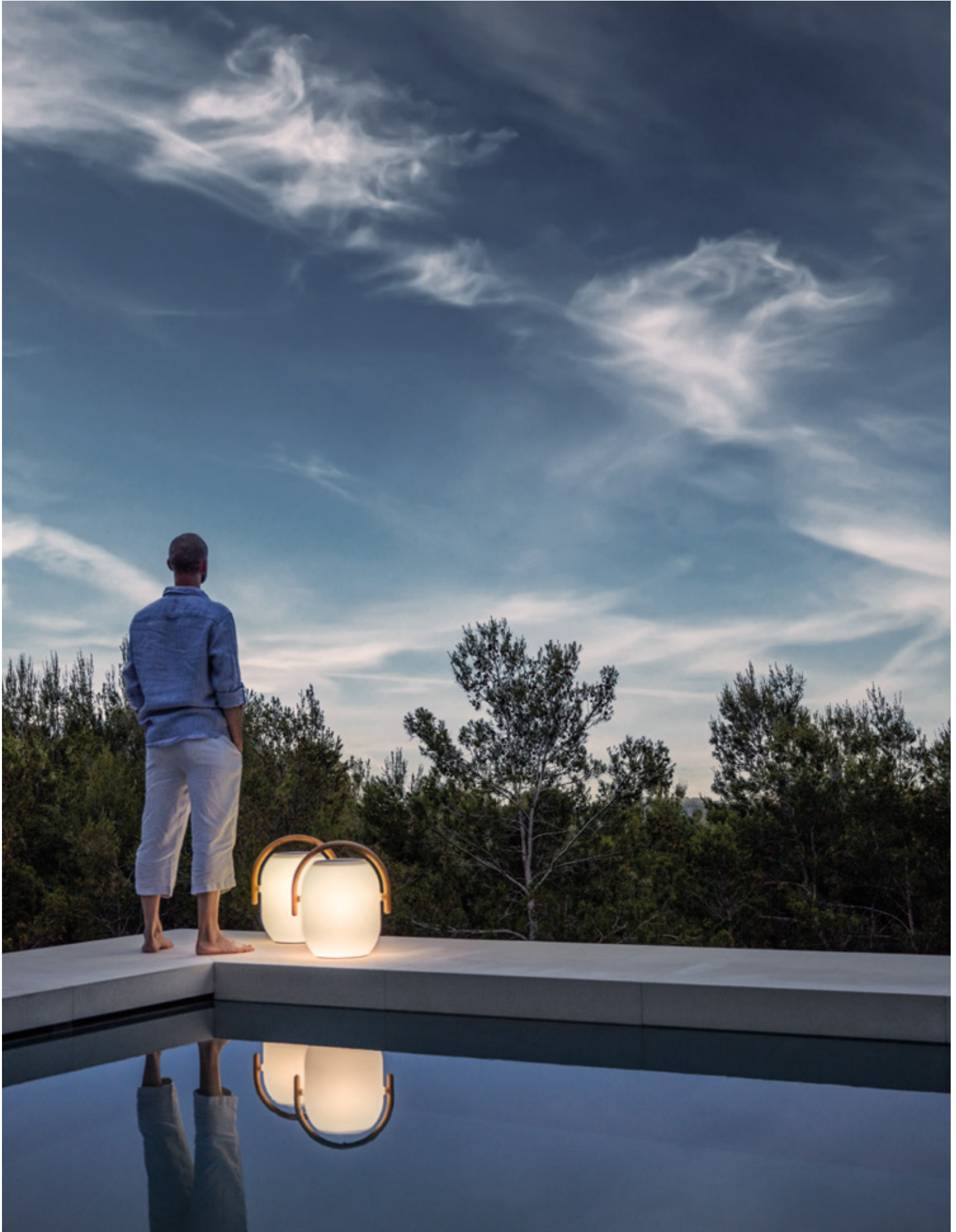




AMBIENT COCOON

Enjoy outdoor living even after the sun goes down. Portable, remote controlled illumination with style, but without strings. Charge during the day and use at night to create the perfect mood.

Mimicking the perfect texture and symmetry of silk cocoons, these minimal and delicate looking lanterns are deceptively tough. Manufactured from modern plastics and combined with a striking solid, teak handle of almost agricultural purity, these (solar LED) lights are as much about design as they are about illumination.





COCOON

Asked about the design influences, designer Henrik Pedersen says "My path in design has led me through many parts of the world, many cultures... Light and warmth are always principal parts of the best social environments and the most modest of devices are often the most effective. Here I combine the worlds of simplicity and light to achieve beautiful background illumination."

288 | 289





LIGHT & SHADOW MAKE THE SHAPES COME ALIVE

Like semi-transparent structures, they present themselves in the dark. A beacon calling out, inviting you in and creating an imaginary room with a soft and warm ambiance.



AMBIENT MESH - Architectural simplicity mixed with a hand-crafted expression.

A fine latticework balanced on a stalk with a soft, tapering transition to the ground, creating both contrast and harmony at the same time. Acting like a visual counterweight to strict and modern architecture.



AMBIENT MESH

Ideal for both stand-alone placement, and as a part of any arrangement. The different heights create a dynamic setting that is easy to place and just as easy to reposition.



AMBIENT MESH

The mesh structure makes it a team player, where tactile surfaces easily combine with other furniture pieces - both lighting or lounging.



AMBIENT MESH

Ambient Mesh by Henrik Pedersen hints to rustic origins. Here, the latticework of woven shades in a variety of sizes and colours, paints a subtle pattern in the dark - breaking up straight lines and creating a whole new set of outdoor decorations.



AMBIENT LANTERN & NEST

Inspired by the precise designs of the weaver bird, these nest like suspended lanterns gently rotate and sway in the evening breeze. As the night draws in, the soft light shining through the detailed weave throws dancing shadows as the setting sun shimmers through the leaves.





FIRE BOWL

Like moths to the light, we are all drawn towards a flickering flame. As the day draws to a close and the temperature drops, kick back and relax with friends and family - a fire bowl creating the perfect focal point to enjoy the setting sun whilst enjoying the warmth of good company.





HALO

PARASOL

Although we all crave the sunlight, shade also has its own unique appeal. The Halo collection of parasols feature sturdy, aluminium frames and heavy-duty Sunbrella fabric canopies. Available as both standard push-up and practical canteliver versions, with Halo, somewhere to cool off and get away from the midday sun is never far away.





GARDEN SHOWER

What is a home without a few unique enhancements to add that final touch of Style? The Deco range of occasional items is the stylish way to bring your outdoor experience to life. Of course, outdoor living and cool, refreshing water goes together and the new Deco Garden Shower offers exactly this.





GARDEN SHOWER

Always nice to the touch, Teak is the perfect choice to put your feet on, because it's never hot in the sun, and never cold in the shade. The teak base on the Deco Garden Shower is combined with a clear and defined design for the frame- based on lower and upper rings, connected by one single straight line. To finish the design, a shower head in warm, polished brass colour is a subtle reference to the real solar disc above.



SEPAL

The forms of the natural world have always provided motivation for designers. The Sepal collection finds its inspiration in the giant floating water lilies that somehow look as though they were engineered by a human hand. With an upturned edge, these can form pads which gently intermingle and create their own pattern on the water. The tables use a ceramic top, edged in powder coated aluminium, which sits on a simple, but beautifully detailed, equilateral teak frame. This pure geometry makes the Sepal table extremely versatile and able to be paired with a variety of Gloster collections. It also allows the two sizes of table when used together to overlap and suggest in turn their own natural rhythm.





COSO



The goal of relaxation is to embrace the moment. To be at one with your surroundings and protected from unwanted distractions. What better way to achieve this hedonistic goal than by ensuring all needs are at your fingertips. Books and magazines. Phones and tablets, remotes for audio or illumination. Your key components of indulgence never need be far away with a beautiful side table and storage system combined.



COSO

Beautiful and tactile ceramic is the foundation of the Coso collection. The striking contrast between a rustic natural ceramic surface and a deep glaze with natural light reflections, becomes a playful contrast, that can be emphasized further by the mixing of the three different, earthy colours. To complete the aesthetic, a natural, warm teak top is removable – making the table both functional and charming at the same time.





BLOW



Bring sophisticated glazes in subtle hues to your life outdoors. The soft lines and natural tones of these beautifully rounded ceramic bases combine perfectly with solid, teak table tops. Eye-catching and inspiring, these accent pieces beautifully reflect light across their soft, round surfaces and compliment any item in the Gloster range while adding character to any outdoor space.

BLOCK



Crafted by bonding staves of solid, plantation teak together into a sturdy structure, Block features a hard-wearing and visually striking surface of end-grain squares. The collection is extended for 2023 season with a new round Side Table and Coffee Table.







BELLS

A CURVACEOUS CLASSIC

The inspiration is almost too obvious - two bells joined together to make up the shape of this iconic side table. The organic and fluid lines make an eye-catching addition to any outdoor area.





RUGS

Heavy duty outdoor rugs are available in either round or rectangular sizes and in several stylish colours of braid. These rugs are woven and are the perfect complement to provide that finishing touch to both dining and seating sets.



GLOSTER FABRICS

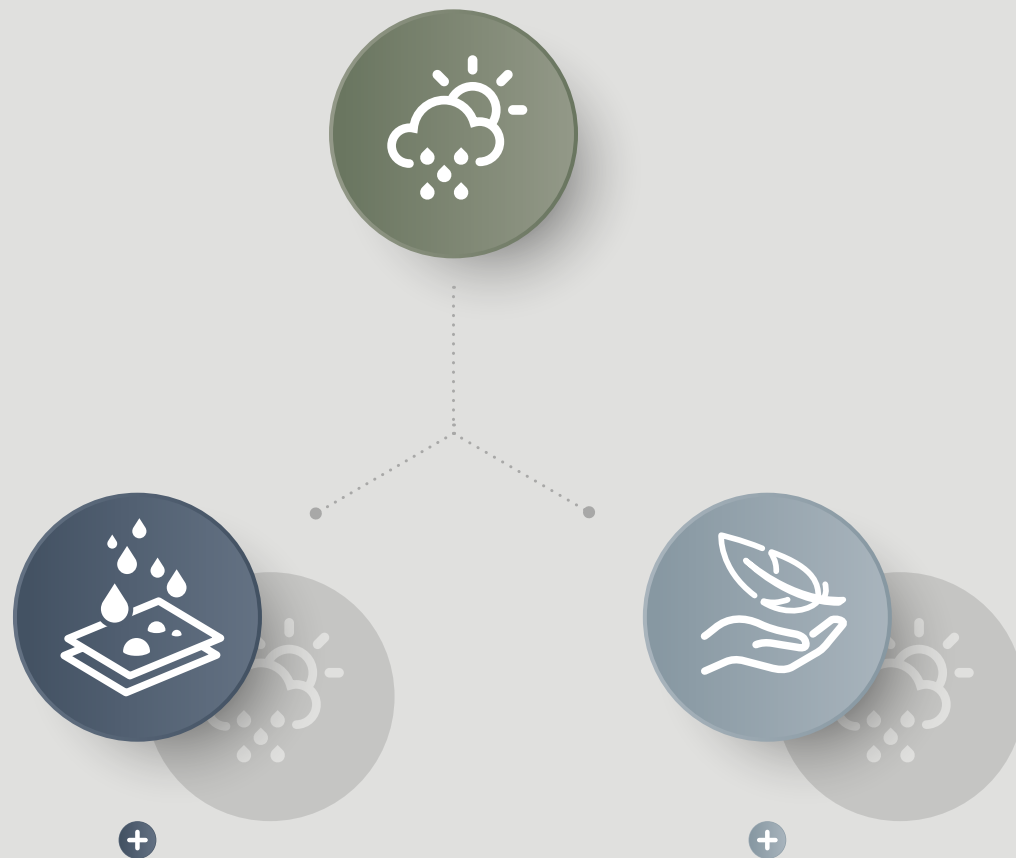
No matter which type of fabric you choose for your cushions, Gloster only use the best outdoor fabrics that are manufactured using 100% solution dyed acrylic yarns for maximum resistance to the fading and degrading effects of sunlight. All fabrics are finished with a water-repellent

coating on the surface to reduce water absorbency. If the fabric does become wet from prolonged exposure, they will come to no harm, and the fabrics will dry out naturally. Gloster cushions are offered with fabrics that fall into three distinct groups:

OUTDOOR PERFORMANCE

Offered in a wide selection of stylish and sophisticated fabrics with a soft hand, our Outdoor Performance cushions use the softest, most luxurious fillings that give

the feel of the most comfortable indoor furniture. A highly water-resistant barrier beneath the outer fabric cover protects the fillings, keeping drying times to a minimum.



MAXIMUM WATER RESISTANCE

For maximum water resistance, a selection of Sunbrella® Rain cover fabrics features a water-resistant coating that is applied to the back face, helping prevent water travelling beyond the surface of the fabric. Although not offering quite the same soft hand as our other fabrics, these water resistant fabrics are very practical and quick drying. The fillings inside the cushion are engineered using open cell materials to allow for maximum air circulation, helping to speed up the drying process even further.

MAXIMUM SOFT TOUCH

Combining with all the benefits present in Outdoor Performance cushions, Gloster offer this range of exclusive, knitted outdoor fabrics, the first to be produced using 100% solution dyed acrylic yarns. These knitted fabrics offer the ultimate in terms of softness, giving a sumptuous cosy feel, while the inherent stretch allows for the perfect fit to even the most demanding of cushion shapes. The Wave fabrics feature a unique, 3D knitted structure giving levels of texture and softness unparalleled in outdoor fabrics.



GLOSTER FURNITURE GMBH

ZEPPELINSTRASSE 22 · 21337 LÜNEBURG · GERMANY
TEL. +49 (0)4131 28753-0

GLOSTER FURNITURE LIMITED

FIRST FLOOR · SUITE 43-44 · AZTEC CENTRE, AZTEC WEST
ALMONDSBURY · BRISTOL · BS32 4TD · UNITED KINGDOM
TEL. +44 (0)1454 631 950

WWW.GLOSTER.COM
CONTACT@GLOSTER.COM